

Road Map



Hybrid Map



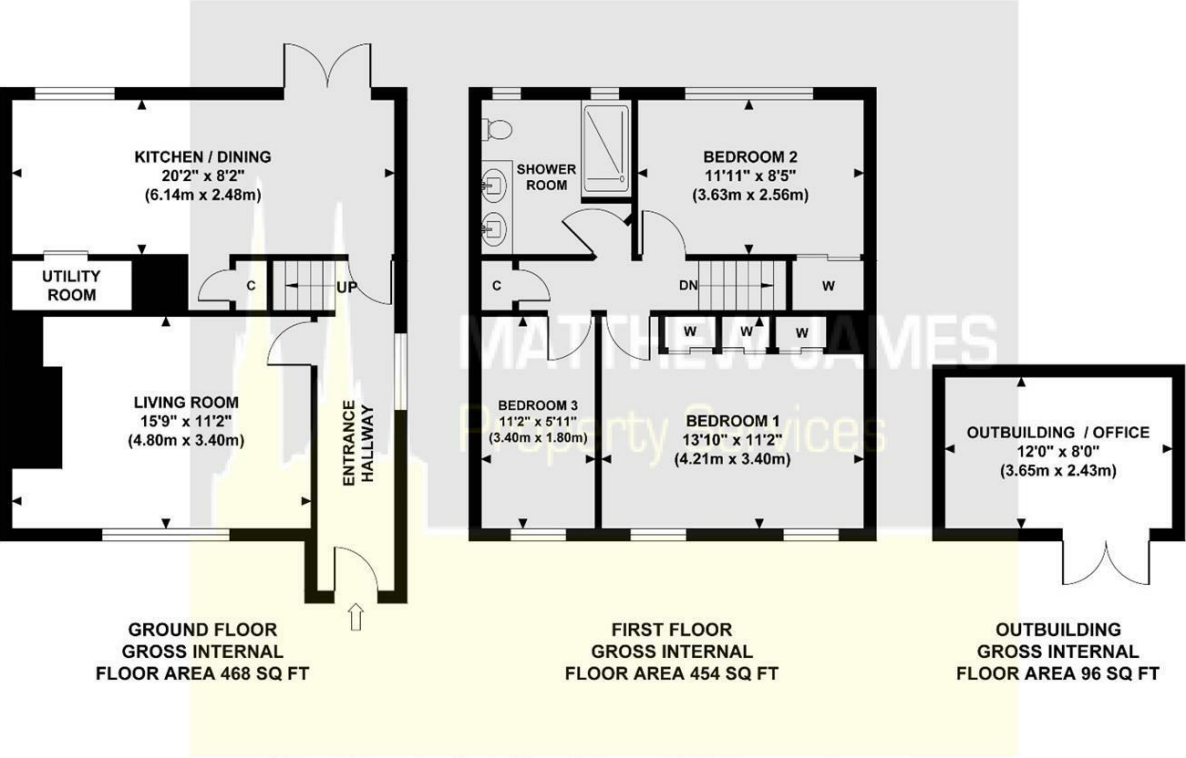
Terrain Map



Floor Plan

38 DARTMOUTH ROAD

Approximate Gross Internal Area 1018 sq ft / 94.6 sq m



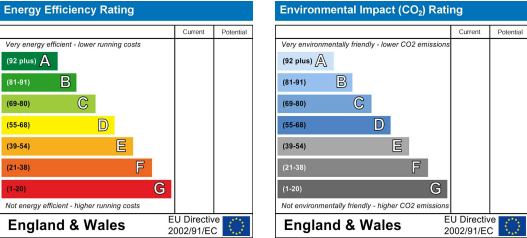
Although every attempt has been made to ensure accuracy, all measurements are approximate and no responsibility is taken for any error, omission, or mid-statement. This floor plan is for illustrative purposes only and not to scale. Measured in accordance to RICS standards.

Viewing

Please contact us on 02477 170170 if you wish to arrange a viewing appointment for this property or require further information.

These particulars, whilst believed to be accurate are set out as a general outline only for guidance and do not constitute any part of an offer or contract. Intending purchasers should not rely on them as statements of representation of fact, but must satisfy themselves by inspection or otherwise as to their accuracy. No person in this firms employment has the authority to make or give any representation or warranty in respect of the property.

Energy Efficiency Graph



MATTHEW JAMES
Property Services



38 Dartmouth Road

Wyken, Coventry CV2 3DQ

Offers Over £285,000



CONTACT INFORMATION

24a Warwick Row, Coventry CV1 1EY

02477 170170

info@matthewjames.uk.com

www.matthewjames.uk.com

Facebook

Twitter

38 Dartmouth Road

Wyken, Coventry CV2 3DQ

Offers Over £285,000



Driveway

Entrance Hallway

Living Room

15'9 x 11'2

Kitchen/Dining

20'2 x 8'2

Utility Room

Outbuilding/ Office

12'0 x 8'0

Upstairs Landing

Bedroom One

13'10 x 11'02 (into wardrobes)

Bedroom Two

11'11 x 8'5

Bedroom Three

11'2 x 5'11

Shower Room

8'4 x 7'8

Rear Garden

Ariel View

